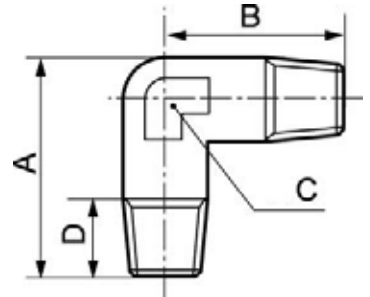


## FITTINGS - ELBOWS - TEE PIECES

Tapered male/male elbow - A33



### Min / Max operating pressure

0 / 15 bar

Part number	Male thread	Dim. A (mm)	Dim. B (mm)	Dim. C (mm)	Dim. D (mm)
A33 18	R1/8	23.5	18.5	10	8
A33 14	R1/4	30	23.5	13	11
A33 38	R3/8	34.5	26	17	11.5
A33 12	R1/2	41.5	31	21	14
A33 34	R3/4	46.5	33	25	16
A33 01	R1	55.5	39	30	17